

WALL THICKNESS MEASUREMENT

*easy
non-destructive
with ultrasound*

THROUGH THE WALL



SONOWALL 50
wall thickness gauge

نماینده انحصاری در ایران

کاوشکاران

تلفن: ۰۲۱ - ۸۸۶۸ ۵۲۹۷

www.IR-QC.com

SONOTEC 

*accurate
quick
cost-effective*

SONOWALL 50

Ultrasonic Measuring Device

WALL THICKNESS MEASUREMENT

accurate – compact – heavy duty

The small and lightweight ultrasonic thickness gauge SONOWALL 50 accurately measures the wall thickness of materials such as glass, metal, ceramics and plastics.

This heavy duty device reliably tests flat and curved surfaces. This wall thickness instrument facilitates detection of corrosion of ships, storage tanks, pipelines, cranes, etc.

practical – cost-effective

The SONOWALL 50 features a stable data readout and a wide measuring range. Equipped with an integrated data logger and a USB interface it is a perfect all-rounder. This robust device is handy and simple to use, for a variety of applications. Besides the high quality components and the high class aluminium housing, the SONOWALL 50 is ergonomically designed.

advantages

- ▶ high accuracy
- ▶ stable data read out
- ▶ integrated data logger
- ▶ one universal probe for a wide measuring range
- ▶ functional design of device and software



technical data

application	measuring device for wall thickness measurement (S/R – principle)
measuring range	0,6 – 400 mm steel (dependent on probe type)
sound velocity range	1000 – 10000 m/s
probe frequency	2 MHz, 5 MHz
accuracy	0,1 mm
working temperature	-10°C – 50°C
storage temperature	-20°C – 70°C
display	illuminated display (128 x 64 pixel)
test block	stainless steel (9 mm), integrated in the housing
connections	USB, probe
power supply	2 x LR6 / AA – primary cell
operating time	40 hours (backlight off)
data logger	max. 10000 readings
size	LWH in mm 128 x 80 x 28
weight	260 g
protection class	device IP65 probe IP67
software	for WinXP and VISTA32

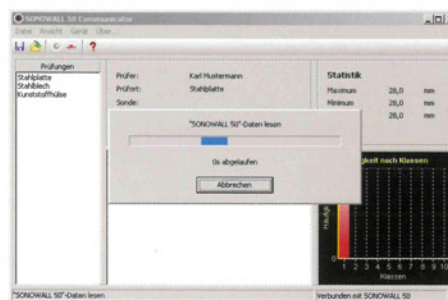
measuring limits



smallest radius for convex surfaces 5 mm



smallest radius for concave surfaces 80 mm



screenshot

The enclosed software allows the readout and the management of the data stored in the device.

scope of delivery

- SONOWALL 50 wall thickness gauge with integrated test block + 2 batteries
- 5 MHz probe with cable (length: 1 m)
- USB-cable, coupling oil
- neck strap, carrying bag
- short operating instructions
- operating manual, software, device driver on CD



SONOTEC 

EN ISO 9001

نماینده انحصاری در ایران

کاشکاران

تلفن: ۰۲۱ - ۸۸۶۸ ۵۲۹۷

www.IR-QC.com

SONOTEC
Ultraschallsensorik Halle GmbH
Nauendorfer Str. 2
D-06112 Halle (Saale)
Tel. +49 (0)345 / 1 33 17-0
Fax +49 (0)345 / 1 33 17-99

www.sonotec.eu
e-mail: sonotec@sonotec.de